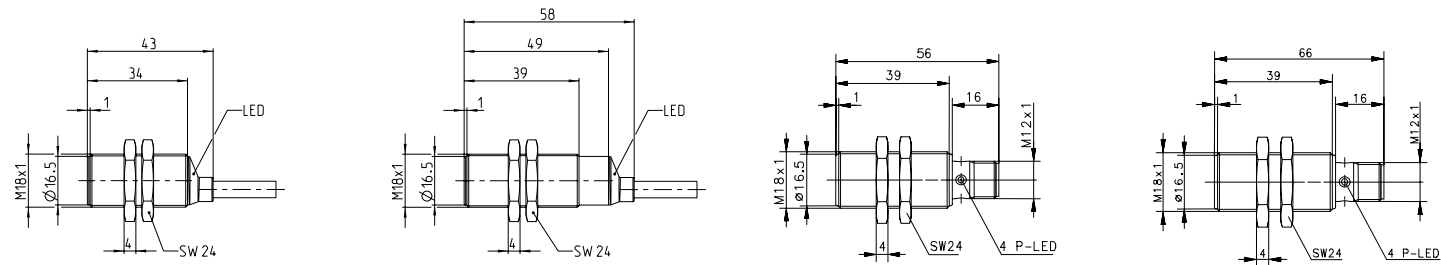


INDUCTIVE SENSORS Type M18



Type	M18	M18	M18	M18		
Enclosure material	CuZn39Pb3	CuZn39Pb3	CuZn39Pb3	CuZn39Pb3		
Type of installation	flush	flush	flush	flush		
Nominal sensing distance	5 mm	5 mm	5 mm	5 mm		
Type of connection	Cable 2 m	Cable 2 m	Connector M12	Cable 2 m		
Special feature	Short type	Standard type	Short type	Standard type		
PNP	DC	NO contact	6532905001 KIB-M18PS/005-KL2VI	6532905002 KIB-M18PS/005-KL2I	6532905003 KIB-M18PS/005-KLS12VI	6532905002 KIB-M18PS/005-KL2I
PNP	DC	NC contact	6532705001 KIB-M18PÖ/005-KL2VI	6532705002 KIB-M18PÖ/005-KL2I	6532705003 KIB-M18PÖ/005-KLS12VI	6532705002 KIB-M18PÖ/005-KL2I
NPN	DC	NO contact	6532305001 KIB-M18NS/005-KL2V	6532305002 KIB-M18NS/005-KL2	6532305003 KIB-M18NS/005-KLS12V	6532305002 KIB-M18NS/005-KL2
NPN	DC	NC contact	6532105001 KIB-M18NÖ/005-KL2V	6532105002 KIB-M18NÖ/005-KL2	6532105003 KIB-M18NÖ/005-KLS12V	6532105002 KIB-M18NÖ/005-KL2
Technical data						
Rated operating voltage range	U_B	10–30 VDC	10–30 VDC	10–30 VDC	10–30 VDC	10–30 VDC
Rated operating current	I_e	≤ 200 mA	≤ 200 mA	≤ 200 mA	≤ 200 mA	≤ 200 mA
Max. switching voltage	F	500 Hz	500 Hz	500 Hz	500 Hz	500 Hz
Short circuit-protection		cyclic	cyclic	cyclic	cyclic	cyclic
Function/operating voltage indicator		LED/–	LED/–	LED/–	LED/–	LED/–
Mechanical data						
Ambient temperature (min/max)		–25°C/+70°C	–25°C/+70°C	–25°C/+70°C	–25°C/+70°C	–25°C/+70°C
Protection class in accordance with IEC 529, EN 60529		IP67	IP67	IP67	IP67	IP67
Connection		3 x 0.34 mm ²	3 x 0.34 mm ²	M12 x 1	M12 x 1	3 x 0.34 mm ²
Approvals						

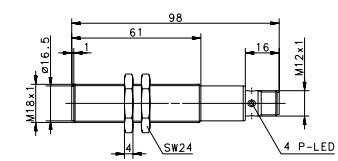
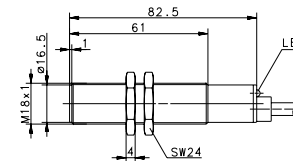
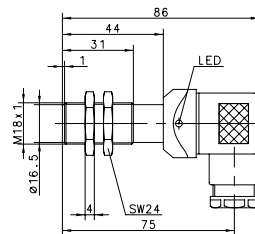
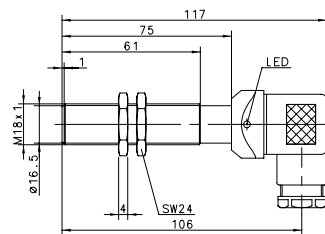
= IO-Link



INDUCTIVE SENSORS Type M18

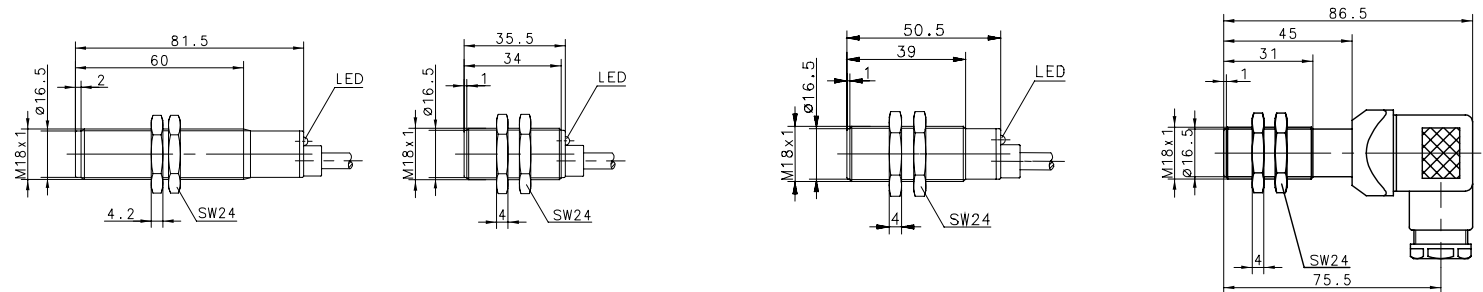


Type	M18	M18	M18	M18
Enclosure material	CuZn39Pb3	CuZn39Pb3	CuZn39Pb3	CuZn39Pb3
Type of installation	flush	flush	flush	flush
Nominal sensing distance	5 mm	5 mm	5 mm	5 mm
Type of connection	DIN Connector	DIN Connector	Cable 2 m	Connector M12
Special feature			Temperature	Temperature
PNP	DC	NO contact	6602905662 KIB-M18PS/005-KLSD	6502940001 KIB-M18PS/005-KLSDV
PNP	DC	NC contact	6502705001 KIB-M18PÖ/005-KLSD	6502905023 KIB-M18PS/005-KL2PUT
NPN	DC	NO contact		6502940006 KIB-M18PS/005-KLS12T
NPN	DC	NC contact		
Technical data				
Rated operating voltage range	U_B	10–60 VDC	10–60 VDC	10–30 VDC
Rated operating current	I_e	≤ 200 mA	≤ 200 mA	≤ 200 mA
Max. switching voltage	F	500 Hz	500 Hz	500 Hz
Short circuit-protection		–	cyclic	cyclic
Function/operating voltage indicator		LED/–	LED/–	LED/–
Mechanical data				
Ambient temperature (min/max)		–25°C/+70°C	–25°C/+70°C	–40°C/+100°
Protection class in accordance with IEC 529, EN 60529		IP65	IP65	IP67
Connection		Plug connector DIN EN 175301-803	Plug connector DIN EN 175301-803	3 x 0.5 mm ² M12 x 1





Type	M18	M18	M18	M18
Enclosure material	PA, red	CuZn39Pb3	CuZn39Pb3	CuZn39Pb3
Type of installation	flush	flush	flush	flush
Nominal sensing distance	5 mm	8 mm	8 mm	8 mm
Type of connection	Cable 2 m	Cable 2 m	Kabel 2 m	DIN Connector
Special feature		Sensing distance	Sensing distance	Sensing distance
PNP	DC	NO contact	6502920990 KIB-T18PS/005-KL2	6502905010 KIB-M18PS/008-KL2VE
PNP	DC	NC contact		6502905022 KIB-M18PS/008-KL2E
PNP	DC	antivalent NO/NC		6602840128 KIB-M18PU/008-KSDVE
NPN	DC	NO contact		
NPN	DC	NC contact		
Technical data				
Rated operating voltage range	U_B	10–60 VDC	10–36 VDC	10–36 VDC
Rated operating current	I_e	≤ 200 mA	≤ 200 mA	≤ 200 mA
Max. switching voltage	F	500 Hz	500 Hz	500 Hz
Short circuit-protection		cyclic	cyclic	cyclic
Function/operating voltage indicator		LED/-	LED/-	LED/-
Mechanical data				
Ambient temperature (min/max)		-25°C/+70°C	-25°C/+70°C	-25°C/+70°C
Protection class in accordance with IEC 529, EN 60529		IP67	IP67	IP67
Connection		3 x 0.5 mm ²	3 x 0.5 mm ²	3 x 0.5 mm ²
				Plug connector DIN EN 175301-803

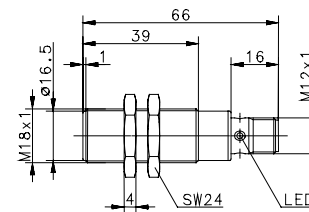
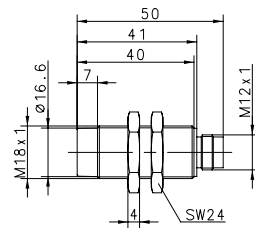


INDUCTIVE SENSORS Type M18



Type	M18	M18
Enclosure material	CuZn39Pb3	CuZn39Pb3
Type of installation	flush	flush
Nominal sensing distance	8 mm	8 mm
Type of connection	Connector M12	Connector
Special feature	Sensing distance / Short type	Sensing distance
PNP	DC	NO contact
		6502906009 KIB-M18PS/008-KS12V
		6502940005 KIB-M18PS/008-KLS12E
PNP	DC	NC contact
NPN	DC	NO contact
NPN	DC	NC contact
Technical data		
Rated operating voltage range	U_B	10–60 VDC
Rated operating current	I_e	≤ 200 mA
Max. switching voltage	F	200 Hz
Short circuit-protection		cyclic
Function/operating voltage indicator		–/–
Mechanical data		
Ambient temperature (min/max)		–25°C/+70°C
Protection class in accordance with IEC 529, EN 60529		IP67
Connection		M12 x 1

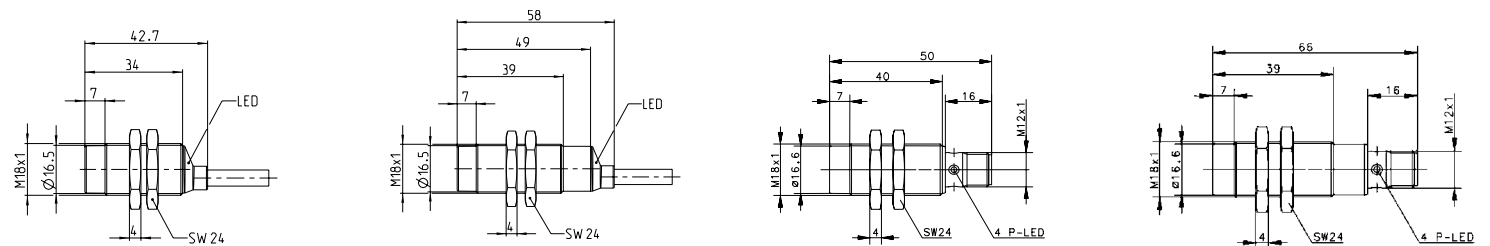
Approvals





Type	M18	M18	M18	M18		
Enclosure material	CuZn39Pb3	CuZn39Pb3	CuZn39Pb3	CuZn39Pb3		
Type of installation	non-flush	non-flush	non-flush	non-flush		
Nominal sensing distance	8 mm	8 mm	8 mm	8 mm		
Type of connection	Cable 2 m	Cable 2 m	Connector M12	Connector M12		
Special feature	Short type	Standard type	Short type	Standard type		
PNP	DC	NO contact	6532906001 KIN-M18PS/008-KL2VI	6532906002 KIN-M18PS/008-KL2I	6532906003 KIN-M18PS/008-KLS12VI	6532906004 KIN-M18PS/008-KLS12I
PNP	DC	NC contact	6532706001 KIN-M18PÖ/008-KL2VI	6532706002 KIN-M18PÖ/008-KL2I	6532706003 KIN-M18PÖ/008-KLS12VI	6532706004 KIN-M18PÖ/008-KLS12I
NPN	DC	NO contact	6532306001 KIN-M18NS/008-KL2V	6532306002 KIN-M18NS/008-KL2	6532306003 KIN-M18NS/008-KLS12V	6532306004 KIN-M18NS/008-KLS12
NPN	DC	NC contact	6532106001 KIN-M18NÖ/008-KL2V	6532106002 KIN-M18NÖ/008-KL2	6532106003 KIN-M18NÖ/008-KLS12V	6532106004 KIN-M18NÖ/008-KLS12
Technical data						
Rated operating voltage range	U_B	10–30 VDC	10–30 VDC	10–30 VDC	10–30 VDC	10–30 VDC
Rated operating current	I_e	≤ 200 mA	≤ 200 mA	≤ 200 mA	≤ 200 mA	≤ 200 mA
Max. switching voltage	F	200 Hz	200 Hz	200 Hz	200 Hz	200 Hz
Short circuit-protection		cyclic	cyclic	cyclic	cyclic	cyclic
Function/operating voltage indicator		LED/–	LED/–	LED/–	LED/–	LED/–
Mechanical data						
Ambient temperature (min/max)		–25°C/+70°C	–25°C/+70°C	–25°C/+70°C	–25°C/+70°C	–25°C/+70°C
Protection class in accordance with IEC 529, EN 60529		IP67	IP67	IP67	IP67	IP67
Connection		3 x 0.34 mm ²	3 x 0.34 mm ²	M12 x 1	M12 x 1	M12 x 1
Approvals						

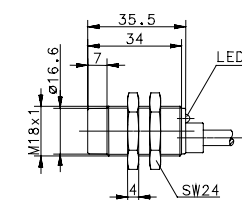
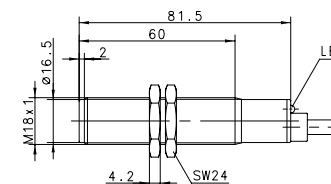
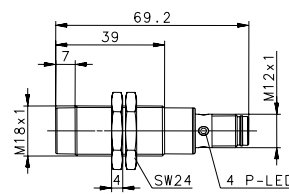
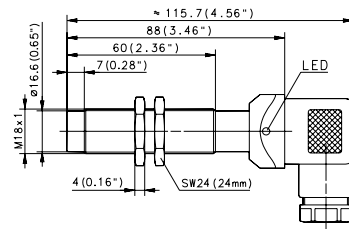
= IO-Link



INDUCTIVE SENSORS Type M18



Type	M18	M18	M18	M18
Enclosure material	CuZn39Pb3	CuZn39Pb3	PA, red	CuZn39Pb3
Type of installation	non-flush	non-flush	non-flush	non-flush
Nominal sensing distance	8 mm	8 mm	8 mm	12 mm
Type of connection	DIN Connector	Connector M12	Cable 2 m	Cable 2 m
Special feature		Ultralock		Sensing distance
PNP	DC	NO contact	6502941001 KIN-M18PS/008-KLSD	6502921975 KIN-T18PS/008-KL2
PNP	DC	NC contact	6502741001 KIN-M18PÖ/008-KLSD	6502906011 KIN-M18PS/012-KL2VE
NPN	DC	NO contact		
NPN	DC	NC contact	6502306011 KIN-M18NS/008-KLS12U	
Technical data				
Rated operating voltage range	U_B	10–60 VDC	10–36 VDC	10–60 VDC
Rated operating current	I_e	≤ 200 mA	≤ 200 mA	≤ 200 mA
Max. switching voltage	F	200 Hz	200 Hz	200 Hz
Short circuit-protection		cyclic	cyclic	cyclic
Function/operating voltage indicator		LED/-	LED/-	LED/-
Mechanical data				
Ambient temperature (min/max)		-25°C/+70°C	-25°C/+70°C	-25°C/+70°C
Protection class in accordance with IEC 529, EN 60529		IP65	IP67	IP67
Connection		Plug connector DIN EN 175301-803	M12 x 1	3 x 0.5 mm ²





Type	M18	M18
Enclosure material	CuZn39Pb3	CuZn39Pb3
Type of installation	non-flush	non-flush
Nominal sensing distance	16 mm	16 mm
Type of connection	Cable 2 m	Connector M12
Special feature	Sensing distance	Sensing distance
PNP	DC	NO contact
	6502906018	6502941004
	KIN-M18PS/016-KL2E	KIN-M18PS/016-KLS12E
PNP	DC	NC contact
NPN	DC	NO contact
NPN	DC	NC contact
Technical data		
Rated operating voltage range	U_B	10–36 VDC
Rated operating current	I_e	≤ 200 mA
Max. switching voltage	F	200 Hz
Short circuit-protection		cyclic
Function/operating voltage indicator		LED/–
Mechanical data		
Ambient temperature (min/max)		–25°C/+70°C
Protection class in accordance with IEC 529, EN 60529		IP67
Connection		3 x 0.5 mm ²

